



September 2020 **RETURN TO SCHOOL**

Technical Briefing
Ministry of Education

August 26, 2020



TERRITORIAL ACKNOWLEDGMENT

I respectfully acknowledge that I am presenting today from the territory of the Lekwungen speaking people of the Songhees and Esquimalt First Nations, and we are grateful for the continued relationship with Indigenous peoples across this province.



GUIDING PRINCIPLES:

1. Maintain a healthy and safe environment for all students, families, teachers and staff
2. Provide the services needed to support the children of our essential workers
3. Support vulnerable students who may need special assistance
4. Provide continuity of educational opportunity for all students

SEPTEMBER RESTART:

- Maximize in-class instruction for all students within the public health guidelines
- Minimize learning gaps and provide academic, social and emotional supports
- Implement Stage 2 of the Five Stage Framework
- Collaborate with sector partners and rights holders
- Create detailed operational plans for each School District and Independent School Authority



April/May

June

Challenges and Opportunities

Other Jurisdictions

K-12 RESTART FRAMEWORK

Updated July 2020

STAGE 1 IN-CLASS	STAGE 2 IN-CLASS	STAGE 3 HYBRID	STAGE 4 HYBRID	STAGE 5 REMOTE
<p>COHORT SIZE</p> <ul style="list-style-type: none"> Elementary: <i>No limit</i> Middle: <i>No limit</i> Secondary: <i>No limit</i> <p>DENSITY TARGETS</p> <ul style="list-style-type: none"> Not applicable <p>In-Class Instruction Full-time all students, all grades</p>	<p>COHORT SIZE</p> <ul style="list-style-type: none"> Elementary: 60 Middle: 60 Secondary: 120 <p>DENSITY TARGETS</p> <ul style="list-style-type: none"> Not applicable <p>In-Class Instruction Full-time instruction for all students for the maximum instructional time possible within cohort limits.</p> <p>Self-directed learning supplements in-class instruction, if required</p>	<p>COHORT SIZE</p> <ul style="list-style-type: none"> Elementary: 30 Middle: 30 Secondary: 60 <p>DENSITY TARGETS</p> <ul style="list-style-type: none"> 50% for all schools <p>In-Class Instruction Full-time instruction for</p> <ul style="list-style-type: none"> Children of essential service workers Students with disabilities/diverse abilities Students who require additional supports <p>In-class instruction for all other students for the maximum time possible within cohort limits and density targets.</p> <p>Self-directed and remote learning supplements in-class instruction</p>	<p>COHORT SIZE</p> <ul style="list-style-type: none"> Elementary: 30 Middle: 30 Secondary: 30 <p>DENSITY TARGETS</p> <ul style="list-style-type: none"> 25% for all schools <p>In-Class Instruction Full-time instruction for:</p> <ul style="list-style-type: none"> Children of essential service workers Students with disabilities/diverse abilities students who require additional supports <p>In-class instruction for all other students for the maximum time possible within cohort limits and density targets.</p> <p>Self-directed and remote learning supplements in-class instruction.</p>	<p>COHORT SIZE</p> <ul style="list-style-type: none"> Elementary: 0 Middle: 0 Secondary: 0 <p>DENSITY TARGETS</p> <ul style="list-style-type: none"> 0% for all schools <p>In-Class Instruction Suspend in-class instruction for all students.</p> <p>Self-directed and remote learning in place of in-class instruction.</p>



ENHANCEMENTS FOR SEPTEMBER

MAXIMIZE IN-CLASS INSTRUCTION FOR ALL STUDENTS

**Investment in health and
safety measures**

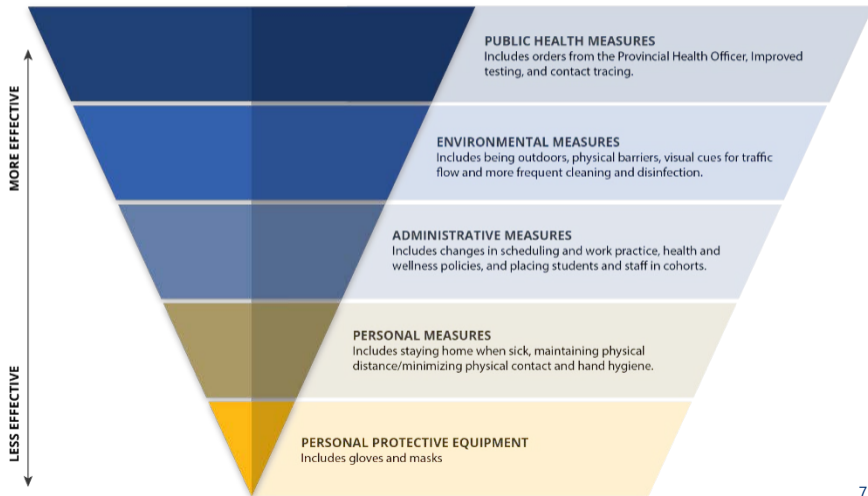
Learning Groups

**Updated Five Stage Plan with
Operating Guidelines**

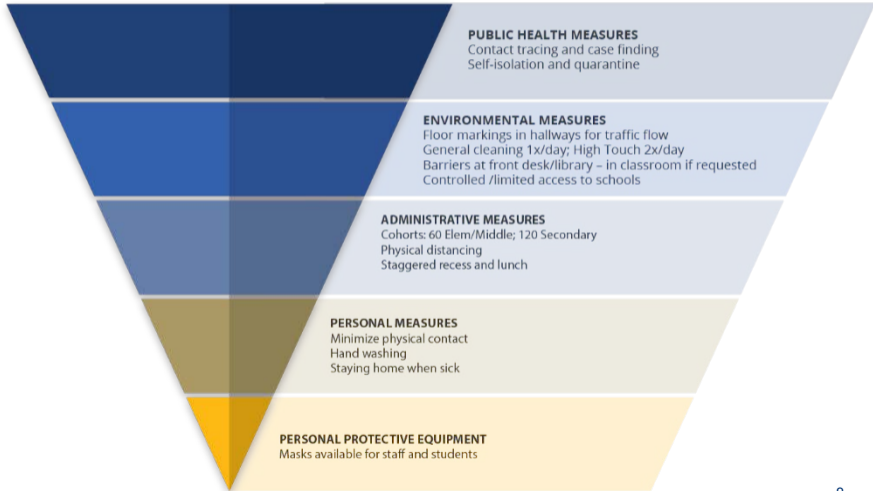
**Collaboration
Steering Committee &
Working Groups**

Gradual re-entry for orientation

Public Health Prevention & Exposure Control Measures



School-Specific Measures





PUBLIC HEALTH GUIDELINES

1. Daily self-assessment of students and teachers – **no one comes to school sick**
2. Enhanced **cleaning** and **hand hygiene** routines
3. Classroom remains primary learning environment, with **learning groups (cohorts) established** to minimize contacts for students and staff:
 - **60** in Elementary/Middle School
 - **120** in Secondary School
4. **Minimize physical contact** in school environment – physical distancing outside of learning groups
5. **Masks** – for staff, middle and secondary students in high traffic areas (e.g., buses and hallways) and outside of their learning group when physical distancing cannot be maintained
6. **Investment** to support the September Restart – \$45.6 million for enhanced cleaning, hand-washing stations, re-usable masks and other measures to support safe learning.



B.C.'S K-12 EDUCATION RESTART PLAN

WHERE ARE WE NOW?

- **JULY 29** | Restart Announcement for Stage 2
- **AUG 10** | Return to School Planning & Reporting Template
- **AUG 17** | Updated K-12 Operating Guidelines
- **AUG 21** | Restart Plans due
- **AUG 26** | Restart Plans finalized

SUMMARY OF PLANS

Plans Approved:

- **60** School District plans received and approved

Elementary & Middle Schools:

- **100%** full-time instruction within Learning Groups (60 or less)

Secondary Schools:

- Vast majority of students will attend every day
- Range of in-person instruction up to 100%
- Local variations in schedules due to:
 - Ensuring health and safety guidelines
 - Access to additional school space
 - Preserving student choice and course offerings
 - Collective agreements
 - Parent, union and Indigenous input



MINISTRY ROLE

- Set legislation, provincial policy and standards (curriculum & assessments)
- Determine graduation requirements and issue graduation certificates
- Regulate the teaching profession (certification & discipline)
- Allocate funding to school districts

SCHOOL DISTRICT ROLE

- Administer and deliver education programs (e.g., determine how to deliver the curriculum)
- Hire and manage teachers/staff
- Determine local operations, including student enrollment and maintenance of capital assets



Pre-COVID Secondary School Schedules

8 courses per year

Linear System – 8 courses per day (rotational timetable)

Semester System – 2 semesters with 4 courses each (break in February)

Quarter System – 4 quarters with 2 courses each

- Courses outside of timetable
- Programs of choice
- Online learning



COVID Secondary School Schedules

8 courses per year

Linear System – not possible with learning groups in large schools

Semester System – can limit choices to students in large schools

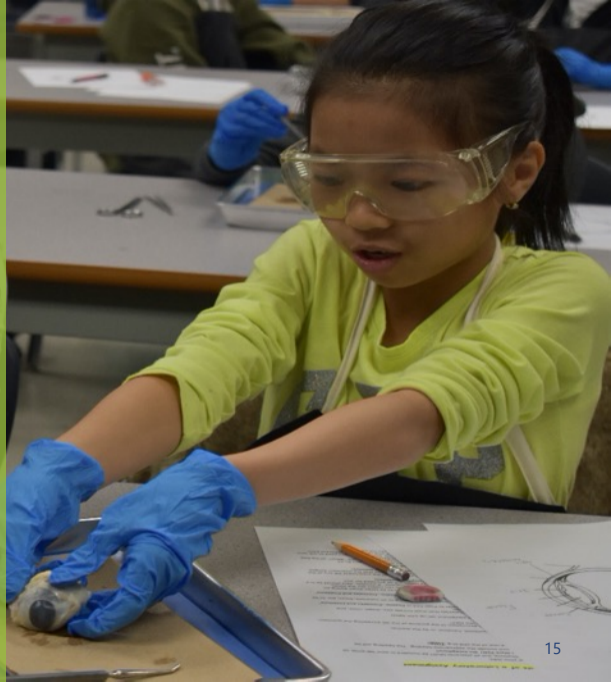
Quarter System – able to offer more choices to students, within learning groups

Eight Semesters – able to offer more face-to-face instruction within learning groups

- Combine face-to-face and online learning
- Divide classes into smaller groups
- Courses outside the timetable
- Online learning

Secondary Schools – Stage 2 Restart

Dr. Jordan Tinney,
Superintendent of Schools



The Task

- Provide choice that students and families expect
- Keep offering a comprehensive program
- Keep students connected to their neighbourhood schools
- Adhere to the Ministry mandate and Public Health guidelines
- Dramatically reduce the flow of students in hallways
- Keep cohort sizes as small as possible

The Result – Grades 8 and 9

Time	Monday	Tuesday	Weds	Thursday	Friday
8:30 - 10:00	Block A	Block A	Block A	Block A	Block A
10:00 – 10:15	Nutrition	Nutrition	Nutrition	Nutrition	Nutrition
10:15 – 11:30	Block A	Block A	Block A	Block A	Block A
11:30 – 12:15	Lunch	Lunch	Lunch	Lunch	Lunch
12:15 – 2:55	Block B	Block B	Block B	Block B	Block B

The Result – Grades 10, 11 and 12

Time	Monday	Tuesday	Wednesday	Thursday	Friday
8:30 - 9:00	Blended Learning	Blended Learning	Blended Learning	Blended Learning	Blended Learning
9:00 - 11:15	Block A	Block A	Block A	Block A	Block A
11:15 - 12:15	Lunch	Lunch	Lunch	Lunch	Lunch
12:15 - 2:25	Block B - Online direct instruction whole class	Block B - Group A Face to Face	Block B - Group B Face to Face	Block B - Group C Face to Face	Block B - Online direct instruction whole class
2:25 - 2:55	Blended Learning	Blended Learning	Blended Learning	Blended Learning	Blended Learning

The Advantages

1. Keeps cohorts extremely small in grades 10, 11 and 12 (30 in one single block);
2. Works from the foundation of students getting the courses they requested;
3. Keeps students on the graduation pathway they have selected;
4. Staggers entry, breaks, lunch, and exit to ensure minimal contact. Greatly reduce our attendance during lunch on any given day;
5. Provides teachers with the time to attend to truly blended learning with in-service time available to them;
6. Provides maximum in-class instruction (100%) to our junior students who need this support the most;
7. Has every student attending school every day; and
8. Can easily be adjusted to decrease or increase contact depending on the stage of the pandemic.



Stage 2

Guiding Principles - Shared Expectations

- ▶ Maintain a healthy and safe environment for students, families and staff by minimizing interactions where practicable;
- ▶ Maintain an inclusive learning model where support for students can be found both in the classroom and resource rooms;
- ▶ Provide educational programming continuity for students and flexible options for those who participate in specialized or life skill programs;
- ▶ Work to maintain staff expectations on their teaching assignments;
- ▶ Understand that timetables are a series of compromises and changes may be ongoing as the year progresses.

School Organization



Elementary Schools (Gr K-5)

- ▶ Division configurations similar to original planning;
- ▶ Cohorts aligned by grade;
- ▶ Staggered breaks and lunch for different cohorts;
- ▶ Play areas divided into zones;
- ▶ Students attend 100% of time.

Middle Schools (Gr 6-8)

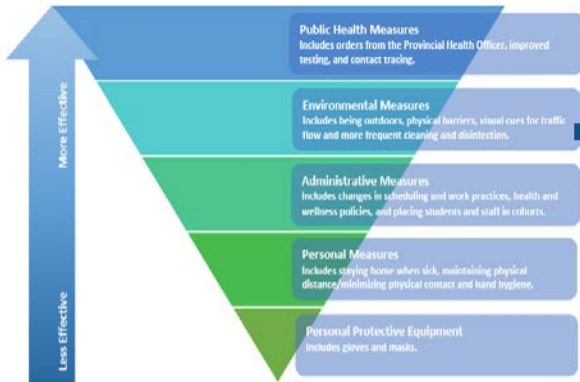
- ▶ Following an elementary school instructional model as compared to a secondary model;
- ▶ Homeroom teachers to teach majority of curriculum;
- ▶ Electives (Fine Arts, Applied Skills, Band) maintained within student cohorts or physical distancing;
- ▶ Staggered breaks and lunch for different cohorts;
- ▶ Separate entrances where possible;
- ▶ Students attend 100% of time.

School Organization

Secondary Schools (Gr 9-12)

- ▶ Preserve student course selections as much as possible;
- ▶ Copernican timetable structure within a quarter system;
- ▶ 2 extended courses (am/pm) for a shorter period (10 weeks);
- ▶ Morning block meets every day; afternoon block alternates days with blended learning model; switches after 5 weeks;
- ▶ Some linear courses maintained to preserve course integrity (e.g. band, strength & conditioning);
- ▶ School flexibility depending on size / complexity / course offerings;
- ▶ Staggered breaks and lunch times;
- ▶ Students attend approximately 75% of time.

The Hierarchy for Infection Prevention and Exposure Control Measures for Communicable Disease

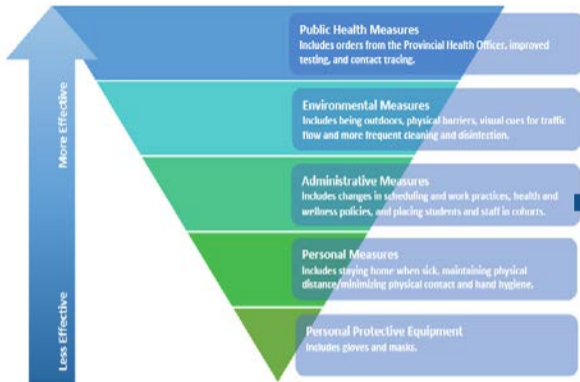


Environmental Measure of Room Readiness: In addition to all other safety measures:

- Schools will implement the [SD48 Room Readiness Policy](#)
- Creates and maintains open, spacious, flexible and hygienic learning and working environments
- Supports our collective social responsibility to a high standard of cleanliness and care at all times
- Supports our custodial staff with their important work



The Hierarchy for Infection Prevention and Exposure Control Measures for Communicable Disease

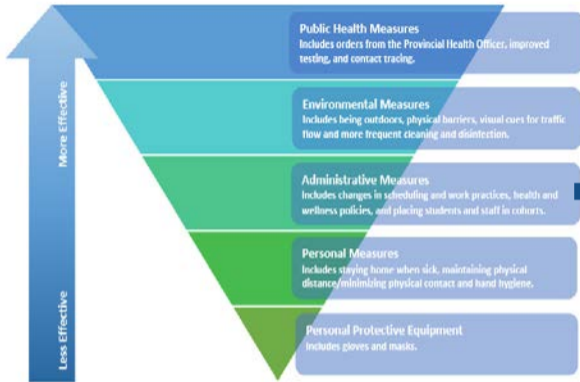


Administrative Measure of 100% In-Class Instruction Options:

- Full time attendance at local school through Learning Group cohort model
- Students will spend most of day in regular classroom setting with their class
- Students will remain within their larger Learning Group during unstructured times like recess and lunch



The Hierarchy for Infection Prevention and Exposure Control Measures for Communicable Disease



Administrative Measure of Mental Health Approach:

- Each school will submit a Social Emotional plan for connecting with students daily on their mental health and well-being



SCHOOL DISTRICT FUNDING

Budget 2020

- Preliminary allocation to districts in March 2020
- Public Schools: \$6.238B
- Increase \$546M
- Covid Supports: \$45.6M
- 19.3% increase over past 4 years

Funding Allocation

- September 30
- Stability and protection
- Local flexibility
- Monitor delivery and costs

Federal Announcement

- Total: \$2.0B
- BC: \$242.36M



Options for Parents and Students

Connecting with Families:

- Share re-start plans
- Confirm student plans for September

Options

- Regular School | On-line Learning | Home School

Local Flexibility

- Determine the education program for students
- Funding to support education program delivery




NEXT STEPS

August 26, 2020 | School districts and schools communicate information to parents on Stage 2 plans and post online

August 26 to September 4, 2020 | Principals contact families to share plans and confirm attendance

September 8 to 9, 2020 | Teachers and staff health and safety orientation and planning

September 10 to 11, 2020 | Student health and safety orientation

- 
- [K-12 Education Restart Plan](#)
 - [Expectations for the K-12 Sector at Each Stage](#)
 - [COVID-19 Operational Guidelines for Schools and Independent School Authorities](#)
 - [Provincial COVID-19 Health & Safety Guidelines for K-12 Settings](#)
 - [COVID-19 Return to School website](#)
 - [BCCDC Public Health Guidance for K-12 Settings](#)